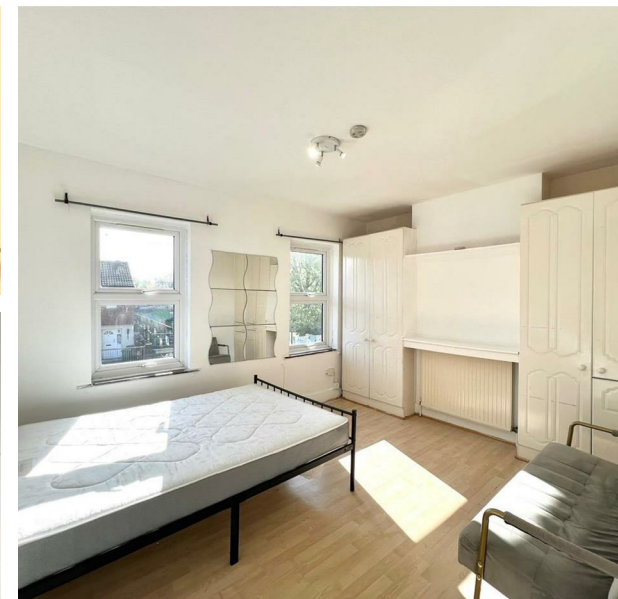


65 Chelmsford Road, Walthamstow, Greater London, E17 8NP
£3,100 Per Month

COMPLETION
SALES & LETTINGS



65 Chelmsford Road, Walthamstow, Greater London, E17 8NP

£3,100 Per Month

Council Tax Band: C

Nestled in the vibrant area of Walthamstow, E17, this splendid four-bedroom Victorian terraced house is now available to let at a competitive price of £3,100 per calendar month. This modern property seamlessly blends classic Victorian charm with contemporary living, making it an ideal home for families or professionals seeking space and comfort.

Upon entering, you are greeted by two generous reception rooms, perfect for entertaining guests or enjoying quiet evenings with family. The layout of the house is thoughtfully designed, providing ample room for relaxation and socialising. The four well-proportioned bedrooms offer a peaceful retreat, ensuring everyone has their own personal space.









337 Forest Road
 London
 E17 5JR
 02085277007
 enquiries@completion.co.uk
 completion.co.uk

